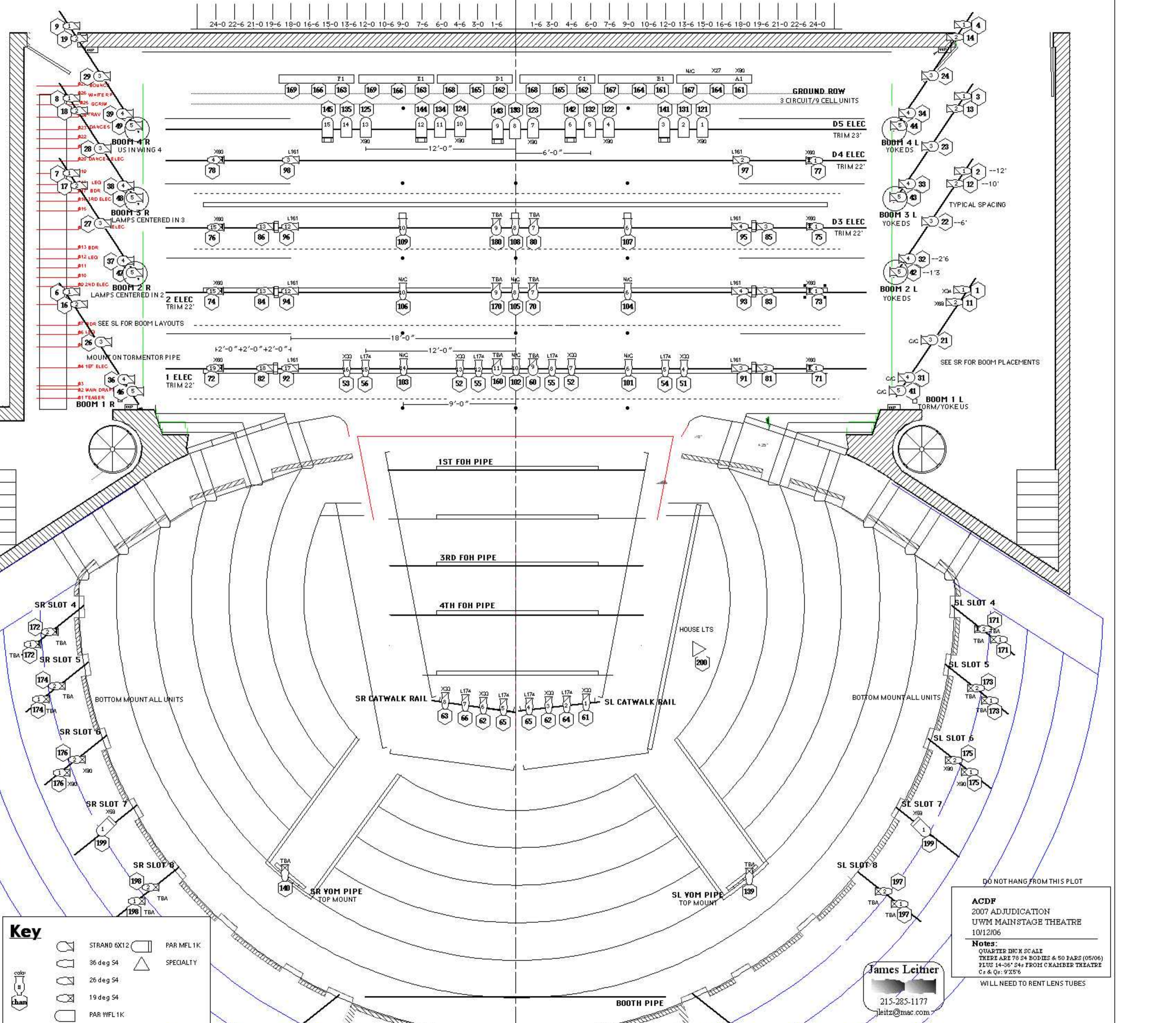


24-0 22-6 21-0 19-6 18-0 16-6 15-0 13-6 12-0 10-6 9-0 7-6 6-0 4-6 3-0 1-6 1-6 3-0 4-6 6-0 7-6 9-0 10-6 12-0 13-6 15-0 16-6 18-0 19-6 21-0 22-6 24-0



**Key**

	STRAND 6X12		PAR MFL 1K
	36 deg S4		SPECIALTY
	26 deg S4		
	19 deg S4		
	PAR WFL 1K		

**ACDF**  
 2007 ADJUDICATION  
 UWM MAINSTAGE THEATRE  
 10/12/06

**Notes:**  
 QUARTER INCH SCALE  
 THERE ARE 78 S4 BODIES & 50 PARS (05/06)  
 PLUS 14-36" S4s FROM CHAMBER THEATRE  
 C & Qs: 9'25"6

WILL NEED TO RENT LENS TUBES

**James Leithner**  
 215-285-1177  
 leitz@mac.com

DO NOT HANG FROM THIS PLOT

HOUSE LTS  
 200

BOTTOM MOUNT ALL UNITS

BOTTOM MOUNT ALL UNITS

SL YOM PIPE  
 TOP MOUNT

SR YOM PIPE  
 TOP MOUNT

BOOTH PIPE

SR CATWALK RAIL

SL CATWALK RAIL

1ST FOH PIPE

3RD FOH PIPE

4TH FOH PIPE

MOUNT ON TORMENTOR PIPE

SEE SR FOR BOOM LAYOUTS

LAMPS CENTERED IN 2

LAMPS CENTERED IN 3

US IN WING 4

TRIM 22'

TRIM 23'

TRIM 22'

TRIM 22'

TRIM 22'

TRIM 22'

TRIM 22'

SEE SR FOR BOOM PLACEMENTS

TYPICAL SPACING

TRIM 22'

TRIM 22'

TRIM 22'

TRIM 22'

TRIM 22'

TRIM 22'

TRIM 22'

TRIM 22'

TRIM 22'

TRIM 22'